



# NEWSLETTER

For The Lee, Lee Common, Hunts Green, Kings Ash and Swan Bottom



## Sales & Lettings

64 High Street Great Missenden  
Buckinghamshire HP16 0AN  
Tel: 01494 890990  
email: [info@jeremyswan.co.uk](mailto:info@jeremyswan.co.uk)  
[www.jeremyswan.co.uk](http://www.jeremyswan.co.uk)

## From the Editor

By Viv Robins

I think this is my favourite time of year in The Lee. With Midsummer Day only a week away as I write, memories of another highly successful fête are still fresh and that other staple of the summer calendar, the Flower Show, is still to look forward to. But we also roam further afield with a report on the growing pains of the world's newest nation (page 20) and we've received a message in a bottle from The Lee's very own Ancient Mariner, John Glanfield, currently on the high seas in a venture that would daunt men less than half his age (page 18).

As usual there will be no August edition: contributions for September should be sent by email to [theleenewsletter@googlemail.com](mailto:theleenewsletter@googlemail.com) or in paper form to me at Crocketts by the 12<sup>th</sup> August please.

## HS2 petitions: the next steps

By Simon Morris, Chairman of CRAG

Well done to all you petitioners. The response to the HS2 Hybrid Bill was

awesome. The total number of petitions deposited was 1,925 – about twice the number deposited for the HS1 Bill and about four times the number for the Crossrail Bill. It means the chances that the Select Committee petition hearings are completed before the end of this Parliament in May 2015 are remote. Although the HS2 Hybrid Bill can be carried over into the next Parliament there is the possibility that a different Government may take a very different approach to HS2 and its massive £50 billion cost.

The petitioning process continues in early July with four days of hearings devoted to challenging the right of certain petitioners to be heard by the Select Committee. Those challenged will have received notification by now and if you need help in arguing your case against the challenge do get in touch (my email is [jsimontmorris@googlemail.com](mailto:jsimontmorris@googlemail.com)).

Following this, the Committee will hear petitions on a geographical basis going from north to south. Petitions will be heard on Tuesdays, Wednesdays and Thursdays each week and hearings will begin in the second half of July. There will be a break for the Summer Recess and they will start again in September. So we are



## CHILTERN RIDGES HS2 ACTION GROUP

unlikely to be called until well into the autumn of this year or even later.

Petitioners, or their Roll B Agents, will have received a notice informing them that HS2 Ltd wants them to use a special secure email system to receive a document from HS2 Ltd outlining its response to their petitions (the Petition Response Document). This additional level of bureaucracy has angered many petitioners and the Select Committee has strongly urged HS2 Ltd to allow them to be contacted by post or normal email. If petitioners or their agents wish to receive the information in that way they should email [SystemsPMOTeam@hs2.org.uk](mailto:SystemsPMOTeam@hs2.org.uk)

### Chance to negotiate

Given the large volume of petitions HS2 Ltd will probably invite petitioners to negotiate settlements to their grievances instead of appearing at the Committee hearings. If you receive an invitation of this kind please let us know. CRAG would like to coordinate the response to such offers to make a strong case for a tunnel. So if you do not have an agent

### DIGITAL • PRINT • COPY • PHOTO

High quality litho and digital printing, reports, manuals, digital copying, business, social & wedding stationery, plan printing, photographic services and much more.



[www.orbitpress.co.uk](http://www.orbitpress.co.uk)

11 Market Square, Chesham, HP5 1HG  
01494 778053 [info@orbitpress.co.uk](mailto:info@orbitpress.co.uk)

then please let us know if HS2 Ltd makes an offer of a settlement to you.

HS2 Ltd has been asked to give petitioners their Petition Response Document at least four weeks before the date allocated for the hearing of their petition. CRAG will be, or may have already been, in touch with petitioners about the need to change agents in the event that those already nominated cannot make the date appointed by the Select Committee.

In addition CRAG wants to coordinate the issues and evidence individual petitioners present to the Select Committee. In each area individuals will be heard last, after the councils, community groups and businesses. To achieve a positive reaction from the MPs on the Select Committee we need to help individual petitioners or their agents make their points in an individual and distinct way and to avoid repetition of points already made.

Enough of petitioning. On the legal front HS2AA and Hillingdon Council have challenged the Government for safeguarding land for HS2 from other developments without first doing a Strategic Environmental Assessment. Legal standards should apply to HS2 as they do to any other project.

Finally, on the political front, the air in Parliament nearly turned blue when Simon Burns, former HS2 Minister, attacked 'biased cry baby' John Bercow (the Speaker) for raising the issue of traffic delays that would be caused by HS2. According to the Mail Online there has been a feud between the two MPs since Mr Bercow overheard Mr Burns questioning his wisdom and denigrating his lack of height.

## Bookworm

By John Andrews

This month I want to share briefly with everyone a most remarkable book: *Ice Road* by Gillian Slovo, set in Leningrad in 1933-1941. The central character is Irina, a cleaner who sees and hears everything, working in the houses of Stalin's elite.

The late 1930s were a period of great turmoil in Russia and Slovo takes us through a number of important events: the sinking of the ice-trapped scientific research vessel, the Chelyuskin, which Irina happened to be on as a cleaner and where she taught herself to read; the shooting of Kirov and the subsequent purge of suspected dissidents, and finally war with Germany and the siege of Leningrad – the Ice Road of the title being of course the road that was eventually built on the frozen lake to free the besieged citizens.

Irina's is not the only voice to take us through these turbulent times; we have Boris, a privileged member of the Soviet elite, Natasha, his headstrong daughter and Anton, an academic. But the real star of the book is probably Leningrad itself, with its poor climate even in summer, freezing and endlessly dark winters and constant lack of food.

Slovo brings scholarship, meticulous research and accomplished writing to this powerful tale of the suffering of ordinary people caught up in the tragedy of war, betrayal and privation.

## The Newsletter

The Lee Newsletter is published 10 times a year and distributed free to all households in the parish. The views expressed in it are not necessarily those of the Editor.

We welcome original letters and articles of general interest and relevance to The Lee. Copy should be sent to [theleenewsletter@googlemail.com](mailto:theleenewsletter@googlemail.com) or, if on paper, to the Editor of the month (see page 1) by the 12<sup>th</sup> of each month.

Letters should ideally run to no more than 200 words and articles to 700 words; material may be edited and may also appear on the village website [www.thelee.org.uk](http://www.thelee.org.uk) unless consent is specifically withheld. Anonymous contributions are not accepted.

To advertise or place an insert, please contact Paul Apicella on 837377 by the 12<sup>th</sup> of the previous month.

If you have photographs for publication please contact Jonathan Batten on 01494 837450 or email [battenjonathan@hotmail.com](mailto:battenjonathan@hotmail.com).

Other members of the Editorial team: Peter Archer, Elizabeth Browning, Andrew Burnett, Jo Jordan, Gilbert Nockles, Viv Robins, Trish Swain, Colin Sully and Barnaby Osborne.

Printed by Strongs: 01442 878592.

### To book the Parish Hall or Scout Hut

'phone Roger Morgan on 837787  
or Anne Barnett on 837796

Rates	9 am - 1 pm	6 pm - midnight
	2 pm - 6 pm	
Mon - Fri	£30 or £10/hr	£45 or £10/hr
Sat/Sun	£12/hr	£70
Bank Holiday	£12/hr	£70
Car park only	£10	
Crockery/cutlery	£15 (hire outside the hall)	

# Dear Diary

The fastest way to let everyone in the Parish know about an event you are arranging is to publish it right here in the Newsletter. Contact the Editor by the 12<sup>th</sup> of the previous month (see contact details on page 1).

## July

Every Sunday in July and August.



**Cream Teas at The Old Church**  
from 3:00 pm until 5:00 pm.

**Thursday 3<sup>rd</sup>. Ballinger Hall Horticultural Society Summer Event.** 8.00 pm Ballinger Hall.

**Thursday 3<sup>rd</sup>. CRAG Public Meeting.** 8:00pm The Lee Parish Hall.

**Friday 4<sup>th</sup>. Midsummer Madrigals and more** at The Lee Old Church. See June Newsletter.

### THE LEeway – YOUR VILLAGE SUPPORT TEAM

If you have difficulty getting to your doctor or the hospital, doing your shopping or would like a home visit and a friendly chat, please ring: Mon - Fri: 10 am - 4 pm. Sat: 10 am - 12 noon.

**01494 837177**

**Saturday 5<sup>th</sup>. Coffee Morning** at Lee Common Methodist Church 10:30 am – 12:00 noon. All are welcome.

**Tuesday 8<sup>th</sup>. The Lee Parish Council Meeting.** 7:30 pm at the Parish Hall.

**Saturday 12<sup>th</sup>. Wendover Music Concert, Henschel Quartet.** 7:30 St Mary's Church, Wendover. Tickets £15. www.wendovermusic.org.uk.

**Saturday 19<sup>th</sup>. The new museum at Fromelles** will be formally opened. See April Newsletter.

**Saturday 19<sup>th</sup>. The Lee Flower Show and Dance.** See pages 18 and 19.

**Thursday 24<sup>th</sup>. Ballinger DFAS, 'Arts and Crafts of Mexico'.** 8:00 pm. Ballinger Hall. Guests welcome; £6 at the door.

**Friday 27<sup>th</sup>. Mobile Library** at the Shop and The Old Swan.

## Coming soon!

**Saturday 2<sup>nd</sup> August. Coffee Morning** at Lee Common Methodist Church 10:30 am – 12:00 noon. All welcome.

**Tuesday 9<sup>th</sup> September. The Lee Parish Council Meeting.** 7:30 pm at the Parish Hall.

**Thursday 25<sup>th</sup> September. Ballinger DFAS, 'Thomas Chippendale and his Contemporaries'.** 8:00 pm. Ballinger Hall. Guests welcome; £6 at the door.

**Saturday 11<sup>th</sup> October. A talk entitled, 'The New Church, its Design and Decoration and the Liberty Influence'** 7:30 pm in St John the Baptist Church. Produced by Janet Whittow, Gilly Hafner and Charlotte Reynolds, tickets £12 which includes wine and canapés after the talk. More information and where to buy tickets will follow.

## Pet of the month No. 3

'Lottie' by Thomas Brockett



**L**ottie is a three-year-old Russell terrier. In human years she has turned 21 years of age so she now has the front-door key to her home.

Lottie comes with me to work every day, gardening wherever it may be – up in the hilltop villages of the The Lee, Ballinger and South Heath or two days a week at Great Hundridge Manor estate. She is great using a hedge-cutter, only doing what she can reach from the ground as she is not that tall and doesn't 'do heights'.

Lottie was born and bred at our local hunt kennels and had a good grounding of loyalty and friendship. She likes to have a good shout when she is guarding my tools in my Land Rover, looking very intimidating, but

she is all noise and a big softy at heart. When she is out socialising in the countryside she is extremely friendly and will be your next best friend. At the moment while I am typing this article she is glued to my side. If I'm out for the evening she will sulk in her bed because I'm not with her.

Lottie does have a bug about motorbikes when we are travelling from job to job. A motorbike will appear on the horizon and off we go: "Woof, woof, woof!" – although she does make a better noise than the people that appear on *X Factor*. It makes me giggle every time she sees a motorbike. She is very intelligent to identify the difference between a motorbike and any other vehicle.

The saying "a dog is a man's best friend" is certainly true – she definitely is mine.



**Service with a personal touch**  
**Hand picked designer frames**  
**Contact Lens Specialist**  
**Retinal Scanning**  
**Family Friendly**

Feel free to walk in at any time  
(our late night opening is on  
Wednesdays) or contact us at:

**Chiltern Opticians Ltd.**  
75 High Street Great Missenden  
Bucks HP16 0AL  
01494 868496  
info@chilternopticians.com  
www.chilternopticians.com

## Your Letters

To the Editor:

Thank you Liz Stewart-Liberty for your most interesting and informative response to my letter concerning the state of the footpaths following the work in the woods during the recent necessary selective thinning. I appreciate all the hard work undertaken in “being the custodian of beautiful woods”. I have even learnt a new word, *silviture*, from the Latin *silvi*, meaning forest!

However, why let your contractors spoil the outcome by leaving such a mess? The paths in the woods have been made impassable and the debris should be removed not only for aesthetic reasons but also for being a fire risk (if we get a real summer!).

### Mervyn's Carpet & Upholstery Cleaning Services

Independent carpet cleaning specialist with over 30 years experience.

CARPETS. UPHOLSTERY.  
RUGS. HARD FLOOR.  
CARPET PROTECTION.  
FULLY INSURED.

Friendly and reliable service.  
Most work by recommendation.  
Environmentally friendly  
cleaning materials.

For a no obligation quote 'phone  
**01494 775807** or **07975 847027**  
Email: [mersu@btinternet.com](mailto:mersu@btinternet.com)

You maintain the paths around Kingsgate Wood (as we do around Kingsgate Farm) but you have not maintained the paths inside the wood.

I would love to come ‘bracking’ with you, as suggested in your letter, on the assumption that ‘bracking’ is clearing the bracken. How about along the footpath in Grove Wood at the junction of Ballinger Road and Chartridge Lane – you might need your tractor?

Peter Jordan  
Lee Gate

To the Editor:

During a recent conversation with George Barnaby I asked him how his film, *Seasons in The Lee*, was coming along and when it might be finished. I thought readers might be interested in his response.

“It’s still some months away”, he said. “There are only a few sequences of filming to complete – all essential to the storyline. The screenplay is in its umpteenth draft and my job-file is bulging with notes and references, including a list of people who have so generously set aside the time to talk to me, provided historical information, indicated areas of interest and the many residents who have participated in video sequences.

“For this I am most grateful and say a big thank you. I am keeping on the case.”

Colin Sully  
Swan Bottom

To the Editor:

Once again Lee Common has raised the highest amount in the house-to-house collections for Red Cross Week in the Great Missenden area – the

shareholder dividends. It seems to me that we have to trust the charities to use money wisely as custodians of our generosity.

In fact there are rumours of a plan to build a railway from Nairobi to Rwanda which, like HS2, will attract foreign interest. In the UK we are good at ‘soft power’ and despite headlines to the contrary British state education is seen by many nations as a bench-mark of high quality.

Our task was to work with 120 seconded teachers and academics to develop the subject syllabuses to a world-class standard. These will shape texts, teacher training, assessment and resources so the potential to change the lives of children is considerable, and they took their responsibility seriously. The main language to be used will be English and for most children this will be their second or even third language. We supported the ‘secondees’ to help them develop approaches to teaching and learning that will work for them, bearing in mind that whilst some children have classrooms with electricity, for many in remote areas such luxuries are not yet available.

We met the Minister several times in a restaurant on the banks of the Nile. He had studied and worked in London and wanted the very best of what the UK can offer for the people he represents. Education is seen as the way to reduce poverty and help the nation determine its own future.

Working with these tall, polite and elegant people, who are so keen to move their nation forward when they currently have so little, represents a

rewarding challenge. So it is an immense privilege to be part of this venture and I hope that I am around long enough to see it bear fruit.



## Abbeyfield

### Great Missenden

A warm, friendly sheltered house for the elderly in the picturesque centre of the village.

Come and take a look and see for yourself and have a chat with Julie Ryder.

01494 865026 or email for a brochure at:  
[abbey\\_missenden@btconnect.com](mailto:abbey_missenden@btconnect.com)

Find more about us on our web site:  
[www.abbeyfieldgreatmissenden.co.uk](http://www.abbeyfieldgreatmissenden.co.uk)

**Abbeyfield is a charity and a  
not for profit organisation**

# Helping to shape world's newest nation

By Martin Baxter

It was the end of an enjoyable day in the French Alps and we were taking in the view in a watering hole at the top of a ski slope when the iPhone pinged: was I interested in joining a small team in May for a project in a developing nation... and they needed to know within 24 hours. I had worked on similar projects in the past but this time I was warned that it was a 'conflict zone' but the risks were 'relatively low'. I had to give it a go.

We were contracted to UNICEF to work with teachers and academics to develop a national curriculum in the world's newest nation of South Sudan. The government wanted to start with a blank sheet of paper and create a world-class curriculum which over time would lead to sustained prosperity, as it is starting to do in Ethiopia, Rwanda and Uganda.

The only obstacle to progress was that in December 2013 the government



leadership fell out and tribal loyalties resulted in bloody conflict. Thankfully the day before we departed a peace agreement was signed (although it did not last long).

Normally on such projects there are opportunities to get close to local communities but this time we could only observe them from the relative safety of an armoured Toyota Land Cruiser. In fact there were fleets of them, which is something that Paul Theroux observed in his travelogue *Dark Sun Rising*. The Chinese and Indians have a strong presence, perhaps sensing the opportunities for access to minerals and establishing telecoms. Theroux relates how there are scars across East Africa where in previous times more developed nations, including the British, had raided but left little to enhance the nation or reduce local poverty.

## We must trust the charities

Could we kick-start a programme which got beyond the Land Cruisers and build capacity for self-improvement? Now there are those who tut-tut at aid to developing nations, and it is true that corruption exists. But then we know that the HS2 construction companies will syphon off capital into executive pockets and

SHARON SMITH

SOFT FURNISHINGS  
QUALITY HANDMADE  
CURTAINS

FLORAL COTTAGE, OXFORD STREET,  
LEE COMMON HP16 9JY  
TEL: 01494 837683  
MOBILE: 07803 499364

overall sum collected was £748.13 and our contribution to this was £169.37. The Senior Community Fund-raiser has expressed her great appreciation and sincere gratitude to you all for your generosity.

Viv Robins and I enjoyed calling on everybody and would like to say Thank You for making it such a pleasant task. See you all again next year!

Jo Boon

Lee Common

*(Additional collectors always welcome – in particular denizens of The Lee have been getting off lightly all these years as Jo and I have never managed to get that far afield: Ed).*

To the Editor:

There are some things that make The Lee a wonderful place to live, where it is a privilege to be part of the community – the summer cream teas, the Flower Show, the shop, the roving supper, the LeeWay and not least the Church Fête.

So imagine my sadness and disappointment that this year a key component of the fête was missing. Where was the maypole dancing by the children from the Church School?

Like Helston without the Furry Dance, Gloucestershire without the Cheese-Rolling or Padstow without its 'Obby 'Oss is The Lee without its maypole dancing.

How have we come to lose this link with our past? What can we do to get it back?

How do we help the school children and parents, its governors and staff realise that we need to keep the traditions alive to keep the village

alive and how much they matter to the rest of us?

In hope for next year.

Jane Marsh

Lee Common

*(For a full account of all the good things that were at the fête see the report on page 11: Ed).*



*The way we were:  
maypole dancers in 2011*

# Cromar Carpets Ltd

CARPETS, VINYL AND  
WOOD FLOORING  
SUPPLIED AND FITTED

9-11 STATION APPROACH  
GREAT MISSENDEN  
01494 862125

## Yes, we have some bananas!



Jill Jones at the traditional summer party for shop volunteers at the home of Shop Committee Chairman Barnaby Osborne. The bananas are from a consignment obtained for the shop by Sally Knowles at what was said to be an excellent price...

### HOLIDAY HOME TO LET IN SPAIN

#### GAUCIN - ANDALUCIA

*3 Bedroom property with pool  
in the hilltop white village of Gaucin.  
Stunning views of Mediterranean,  
Gibraltar and Moroccan Hills.*

**Ring now for availability  
Tel. 01494 837602**

[www.holiday-villa-andalucia.co.uk](http://www.holiday-villa-andalucia.co.uk)

## News from the Parish Council

By Jo Jordan, Clerk

The annual financial statement has been prepared and the figures have been audited. If you wish to view the annual figures please contact me between 23<sup>rd</sup> June and 18<sup>th</sup> July 2014. Please see notices on the Parish Council boards for further information.

### HS2 Hybrid Bill

The Parish Council have submitted a petition in connection with this Bill which can be viewed at <http://www.publications.parliament.uk/pa/cmhs2/petitions/petcontents.htm> Our petition number is 1022.

The Parish Council will continue to prepare information that will be required later in the process.

### Shop/Parish Hall/car park

The Council and the committee for the Parish Hall are working with Bucks County Council on the improvements to this car park and the grass verges. Some improvements have already been made and others are under discussion.

### Allotments/playground

As the problem with dog-fouling has not improved the Council are considering whether all dogs in this area should be kept on leads. If you would like to comment on this idea please contact me at [theleeparishcouncil@hotmail.co.uk](mailto:theleeparishcouncil@hotmail.co.uk). or attend the next council meeting.

We are sorry to have to report that some of the signs that had been put up have been stolen – if you have any

If you would like to donate a prize for the raffle then call Anne Kenyon on 862585. If you have bric-a-brac call Reina Free on 837407. If you have books for the bookstall call John Cameron on 864790.

If you can bake a cake for the tea tent then bring it along to the pavilion in the morning or better still enter it in a cookery class and then donate a part of it to the tea tent.

and then...

## Dance to The 101s

Put on your dancing shoes and get down to the marquee for the best night of your lives.

Tickets, priced at only £20 each are still available for the Flower Show Dance from the Shop at The Lee until Saturday 12<sup>th</sup> July. Contact Pippa Hart on: 837340 or [pippahart@freuk.com](mailto:pippahart@freuk.com)

## Seats for all...



*Punters and some of their pets enjoying the new seating outside the Shop @ The Lee*



**Do you need a  
Helping Hand?**

If you are looking for an **alternative to residential care** or extra support for those everyday tasks that are becoming difficult for you or a loved one – then we're here to help - **from 30 minutes per week to Live-in Care.**

Our **Lee care team** has been providing award winning quality homecare since 1989 and can help with: personal care, housekeeping, help getting around or even to provide a break to an existing family member or care-giver.

To find out how we can help,  
**call: 01280 428 237 or  
visit: [www.helpinghands.co.uk](http://www.helpinghands.co.uk)**

## Six days before the mast



By John Glanfield

**A**t the venerable age of 93 John Glanfield has been sailing a tall ship on the Viking route from Norway to Shetland under the protective eye of his experienced sailor grand-daughter.

Here's a flavour of his adventure culled from a hasty postcard sent to land-lubbers in *The Lee*:

"Reality exceeds boyhood's dream! . . . The beautiful great barque under full sail moves serenely under clear blue sky over dark blue sea... White horses in Force 5/6 at 7/8 knots... Slipping quietly, gracefully... For us 120 trainees a strict regime in good humour... Duties include sail-rope training and watch-keeping

### MARTIN THE MILKMAN

Doorstep delivery of fresh milk, dairy produce, bread, eggs, fruit juices and more.

To place an order call

**01442 833944**

PHONES MANNED 4 PM – 6 PM  
ANSWERPHONE AT OTHER TIMES

a.m.... scrubbing decks, galley work p.m. – and best of all steering the big wheel with compass."

*Once his calluses have healed we hope John will write a full account of his exploits for the September edition of the Newsletter: Ed.*

## Flower Show final countdown

By Jonathan Batten

**O**nly three weeks to go before The Lee Flower Show on 19<sup>th</sup> July and the excitement is building.

The committee has been preparing: the posters are on the roadsides, the flags will be flying and the cricket field will be transformed with the largest marquee to be seen in The Lee... since last year. The grass is being cut, the bands are tuning up, the magician is rehearsing his tricks, the animals are waiting...

For your part you need to decide on your entries and get those to Ann Ash by 17<sup>th</sup> July. It's all there in the schedule – a variety of classes for all of you to participate in – if you've mislaid it download another copy from the village website – just follow the Flower Show link.

If you need any help with entries please feel free to ring our dedicated helpline 837550.

A small army of helpers is needed to put on the show so thank you to all those who have already enlisted – if you haven't been asked but would really like to help do please call me on 837450.

information on this theft please let us know. It is such a shame that someone behaves in such a negative manner as we try to make the area safe and pleasant for everyone to use.

### Date of next meeting

The next meeting of the Parish Council will be on 8<sup>th</sup> July 2014 in the Parish Hall at 7:30 pm. In view of the recent concerns about some of the local footpaths Rosie Taylor, the officer responsible for footpaths in our area, will be attending – please come along if you want to know more about footpaths.

## Leeside Nursery

By Penny Burgess

**T**his term has been fun-packed with many interesting themes to get our children thinking about the world around them.

We have been thinking about mini-beasts and enjoying collecting and finding out about the insects, butterflies, beetles and worms – and even a lizard that we found in the nursery garden. We learned about metamorphosis through the life-cycle of the butterfly. These interests gave us some lovely craft ideas as well as

### South of France, Côte d'Azur

Beautiful old stone house originally an old olive mill located in a small quiet square below the ruined castle walls of Callas in the Var. Sleeps 4 guests, furnished to a high standard, roof terrace with stunning view across the vineyards towards the sea at Fréjus.

For a colour brochure call 01494 837122 or email: booth.tilia@btinternet.com

introducing the children to new and exciting words, stories and concepts.

The highlight of the term so far has been a trip to Butterfly World. The children loved exploring and looking at all the tropical butterflies in the hothouse and listening to a talk geared to their age. They enjoyed playing on an enormous ant in the play area as well as going down a number of different types of slides. The coach trip there and back was also exciting for them.

We are looking forward to our sports day and there will be a poignant day later for children, parents and staff when we have our leavers' morning.

May I take this opportunity on behalf of the staff to wish all the very best to our lovely children who will be starting school in September.

TIM SIMMONS IS

**THE VERMINATOR**

**PEST CONTROL SERVICES**

WASPS  
GLIS-GLIS  
SQUIRREL  
RATS  
MICE  
MOLES



ALL  
INSECTS  
FOXES  
RABBITS  
AND  
ANTS

**FAST FRIENDLY SERVICE**

LOW PRICES - HIGH QUALITY

**07734649305**

**WE WILL ALSO PROOF YOUR  
HOUSE/PREMISES TO STOP THEM  
COMING BACK**

# Use the things you've got



By the Revd David Burgess

“God gave me the foundations: it's up to me to build on them.”

This brief quote comes from a radio interview on the eve of the last football World Cup in 2010 with Steven Pienaar, the South African international and former captain who plays his club football with Everton. And in an earlier interview he said this:

“I was very fortunate... to be able to polish the technique and the talent that God gave me and to learn how to use it in the way that God had wanted me to.”

I think that Pienaar has captured exactly the point of living the Christian life. It's about what you're given and what you do with it.

You have to balance the two. Firstly, there can be problems if you concentrate too much on what you're doing without referring back to God and the spiritual foundations he's laid

## Mike Lake

Friendly & Local

### Painter & Decorator

For that professional touch

Interior & Exterior  
Also Property Maintenance

For a free quotation please call:  
01494 866873 / 07723 017005  
mikelake42@talktalk.net

for you. A colleague once described the problem of too many people within churches being evangelical for the wrong things, and I know exactly what she meant.

There's nothing wrong with being keen on social events or enhancing the church building or church music, as long as these things are a means to an end and not an end in themselves. Otherwise you run the risk of enthusiasm turning into obsession and of your church becoming activist with little genuine spiritual basis. Jesus himself describes that risk in the parable of the two houses, one built on rock and the other on sand.

On the other hand we need to avoid being a church that (or an individual who) quietly does nothing very much, running from Sunday to Sunday with little or nothing to show for it in people's lives or in the life of the community in between times. If you don't seek what God has given you it could wither or die; or you might not even know what your gifts are in the first place.

Jesus tells another parable, the parable of the talents, to show how important it is to make good use of the gifts and abilities you've been given, and James, Jesus's brother, puts it even more directly and bluntly in his epistle: “Faith without works is dead.”

Very few of us will get to play in the World Cup finals or lead a multinational company or make life-changing contributions to science, medicine or the arts. But I do believe that God has a unique place for each of us in this world and has given us gifts and abilities to cement our place here. Those are the foundations; recognising and building on them is up to us.



said that they would like to come to do a photo shoot and would I be OK with that? Errrr... YES!! So a quick sort-out with the logistics, permission to leave school early after teaching, getting Tara Castaldini (who helps look after Lady) booked in for ‘beautifying duty’, a call to Equilibrium (a horse products company that supports me and gave Lady and me our photo shoot outfits) and Mum and Dad for general transport and help, and the shoot was booked in.

The day before the shoot H&H gave me a ring detailing what photos they wanted to get so that we were prepared and mentioned that they needed to try and get something suitable in case they wanted a cover shot from our shoot. On the day of the shoot Dad picked me up from the station and when we arrived home I could almost see my reflection in Lady's coat - Tara had done a stunning job. I quickly plaited her tail and

changed and then it was shoot time! First we started off with some head shots of Lady and then a few of me jumping her. We finished with some shots around the yard. It wasn't until over a week later that the issue was out and we saw our cover girl!!

Dad was up at The Lee shop nice and early to buy one of their two issues - lucky he did as the ever-reliable post didn't deliver our subscription issue till the Friday! It was very exciting and will definitely be hanging in a frame on my wall soon! H&H did a fabulous job with the article - covering a double page spread and even getting a picture of Mummy and Daddy Hart in there, much to their shock! Lady now thinks she is a right diva and I think some of my family and friends now have a little more understanding of my bonkers lifestyle!

the practice<sup>+</sup>

### The Practice Prospect House Local NHS GP Surgery

- Open, caring, friendly service
- A team of three doctors
- Saturday surgeries (fortnightly)
- Chiropractic treatment offered privately by Comley Chiropractic
- New patients welcome

To register please call in at the surgery

108 High Street, Great Missenden  
t. 01494 862325  
www.thepracticeplc.com



better-behaved than the dog belonging to the person who told me that a German shepherd was too big to bring into the church garden. Is it any wonder why people with Asperger's Syndrome get confused by neuro-typical people?

All three local pubs allow dogs inside but most of the shops in Chesham do not allow them, claiming that it is against health and safety rules – this is not accurate. Dogs are not allowed in food preparation areas but there is no mention of them not being allowed into, for example, banks. It is just company employees that make up such stupid rules, and I tell them so. The best exception to this stupidity is *The Jolly Sportsman* in Eskdale Avenue – they allow well-behaved dogs into their bar and lounge areas so why can't other food outlets? What do people think we are going to do with our dogs when we want to eat? We always go somewhere where we can go with our dog.

### What is an A.O.N.B.?

We live in an area of outstanding natural beauty but I'm not quite sure how that definition comes about – yes, the fields are lovely to look at and walk through, but these are criss-crossed with roads and will soon have a huge railway line cutting through it. We are buzzed overhead by numerous helicopters taking people here and there – and probably members of the Government to and from Chequers. Then we have the old Kingsgate Farm with its derelict chicken houses, rusty oil tanks, asbestos lying around and the partly-boarded up sections left in an appalling state. But the footpaths that run across it are nicely trimmed!

And we have the alpacas - though I'm not sure they form part of the equation when an AONB is established?

We are staying in the parish now we're here as I really do not want to move again – way too disruptive to my world – and I may get to know more of the local community over time.

Thank you for reading this article. If you would like more information about Asperger's Syndrome log onto the National Autistic Society's website at [autism.org.uk](http://autism.org.uk).

## The day my horse became a cover girl

By Jennifer Hart

I'm Head of Chemistry at Chelsea Academy and spend half my life in London and half in The Lee where I keep my eventing horse (dressage, show jumping and cross country) at my parents'. I compete at 2\* level, which is a level below the Olympics, on my horse Flora Lady.

Back in April I was doing the usual morning check through my emails - some work, lots of junk and one from the Horse & Hound reader panel that I became a member of a few years back. The request was for an upcoming feature asking for any amateur riders that juggle their competing with working in a job outside of horses. I fired an email back with a brief biography stating my level of competing and a brief job description, expecting that to be that. A few days later H&H got back asking me to keep a diary for the next 10 days and that they would like to feature me.

At the end of the 10 days I emailed my diary off and then had a telephone interview, at the end of which H&H

## Services for July and August

### St John the Baptist

#### July

2 <sup>nd</sup>	10:00am	HC <sup>M</sup>	Revd D Burgess
6 <sup>th</sup>	8:00am	HC	Revd D Burgess
	10:00am	Matins	Lay-led
13 <sup>th</sup>	10:00am	PC	Revd D Burgess (Sunday School)
20 <sup>th</sup>	10:00am	All-Age	WWI Commemoration Revd D Burgess
27 <sup>th</sup>	10:00am	PC	Revd J Hull

#### August

3 <sup>rd</sup>	8:00am	HC	Minister TBA
	10:00am	Matins	Lay-led
6 <sup>th</sup>	10:00am	HC <sup>M</sup>	Minister TBA
10 <sup>th</sup>	10:00am	PC	Revd P Soundy
17 <sup>th</sup>	10:00am	Family	Service at Lee Common Methodist Church
24 <sup>th</sup>	10:00am	PC	Revd D Burgess
31 <sup>st</sup>	10:00am	PC	Joint Service at Cholesbury

<b>HC</b>	Holy Communion (said).
<b>PC</b>	Parish Communion (sung).
<b>8:00</b>	Services in the Old Church.
<b>M</b>	Midweek Communion

A brief, simple service will be held on Sunday 20<sup>th</sup> July to mark the **centenary of the outbreak of WWI** – the service is earlier than some because many people are likely to be away in early August when other commemorations are held.

We normally designate the **second Wednesday of each month** as a day for individual prayer on a specific

topic; we will be restarting this regular commitment in September.

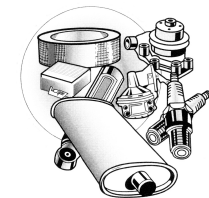
**A Church Fellowship group** continues to meet regularly. For details contact Reina Free on 837407.

**Contacts.** Vicar: The Revd David Burgess (837315). Churchwardens: Roderick Neal (837264), Trevor Pearce (837601). Verger: Bill Pearce (785191). Treasurer: David Stephenson (867617).

### Methodist Church

#### July

6 <sup>th</sup>	3:00pm	Jaqi Sheppard
13 <sup>th</sup>	3:00pm	HC Revd Vincent Jambawo
20 <sup>th</sup>	10:00am	Joint Service at St John the Baptist Church
27 <sup>th</sup>	3:00pm	Pam Sitford



### WENDOVER MOTOR SERVICES LTD

MOT TESTING • SERVICING

TYRES • REPAIRS

Ash Service Station  
London Road • Wendover

Aylesbury • HP22 6PN

Tel: 01296 624349

Mobiles: 07836 373886/

07831 323543

## August

3 <sup>rd</sup>	3:00pm	HC	Revd G Hargrove
10 <sup>th</sup>	3:00pm		Jaqi Sheppard
17 <sup>th</sup>	10:00am		Joint Service with St John the Baptist Church
24 <sup>th</sup>	3:00pm		Revd Vincent Jambawo
31 <sup>st</sup>	3:00pm		Revd David Jebb

Our next **coffee mornings** are on Saturday 5<sup>th</sup> July and 2<sup>nd</sup> August, 10:30am to 12 noon. All welcome!

## My feathered friends bring such delight

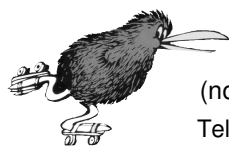
By Reina Free

Since I was a little girl I always liked birds. I had a canary in a cage and a cock and hen in a pen.

Later, when I came to England over 50 years ago and first lived in Chartridge, my husband Bill built for me a small aviary. And here in Kings Ash he built me a big beautiful one which I planted in bushes. The birds were spoilt by me and, happy, made nests and had babies. It was my pride and everyday joy. Yet twice burglars cut the wire netting and stole my birds.

### GENERAL PROPERTY MAINTENANCE

Exterior/Interior Painting & Decorating,  
Fencing, Gates, Patios & Decking



**KIWI SERVICE**

(no job too small)

Tel: 01494 783334  
Mobile: 07719 309731

I started again, then either a weasel or rats killed them. I entered a state of inner bereavement which in some ways never left me.

Therefore as I walk along Kings Lane I get so much joy and fun. The Jenny Wren singing so loudly, hopping along in the hedgerow as I pass. The beautiful yellowhammer singing its special song. The lapwing gliding and diving across the field, fearlessly defending its babies against hungry crows and kites.

Have you ever watched a pigeon suddenly rising up and diving down in sheer joy? Heard a woodpecker make that lovely laughing sound during its special 'up and down' flight?

Observing a buzzard being attacked by crows, rolling over and kicking its legs up in defending itself. The sparrows twittering in the hedgerow. And, after having been absent for many years, I heard the cuckoo again.

And the larks – and there are quite a few – singing even when the weather is dull and cold. Crows, jackdaws, rooks, there are even ravens – still quite rare – making a strange croaking sound, bigger than crows, with wedged tail.

Then of course the beautiful singing of the thrush and blackbird, the calling of the tawny and little owl at night.

Such a wonderful beautiful world, a world that deserves and needs protection at any cost. The screeching noise of HS2 will silence the singing of birds, frighten the animals and destroy woods, hedgerows and lanes like Kings Lane.

It's an act of gross dishonesty against people and animals for which there are no words. And it must be stopped – no matter what it takes!!!

## On moving to The Lee

By Andrew Jordan

We moved to The Lee area a couple of years ago and I have to say that I am now living in the best home I've ever lived in. We are surrounded on all sides by our own garden and whichever window I look out of I see 'my' world – very important for me as I suffer with high-functioning autism, otherwise known as Asperger's Syndrome.

Whenever I go outside my house into my garden I hear dogs barking and howling which is very disturbing on my ears and upsets 'my' world. I can, however, walk a short distance from my world along what used to be pleasant footpaths and enjoy the tranquillity of alpacas - I do not find it easy to talk to people I do not know but the owner of the alpacas takes the time to talk to me about his lovely animals. The best footpaths are the ones across the old Kingsgate Farm except when the hunt ruins them with their huge hooves. The hunt people let their dogs run everywhere with little or no respect for others – this is a frightening time to be outside my world.

When I'm out, I always look out for a neighbour and his lovely spaniels who are always so full of energy and usually quite dirty from all their foraging around. It is nice to see dogs enjoying themselves so much and they are so well-behaved.

### Cream teas in summer

We walk over the fields on Sundays in the summer and enjoy the delicious cream teas on offer at the local church. The 'cream-teas people' are just there

to serve us cream teas and are not trying to convert us to Christianity. Neuro-typical people (*people who are not on the autistic spectrum: Ed*) are really difficult to understand most of the time: for example, I walked to the church for a cream tea last summer with my 10-month-old German shepherd puppy, only to be told by one of the organisers that he was too big to bring into the church garden. But this same person had a dog that was easily bigger than mine and not nearly as well-behaved. My dog lay under the table and stayed put while I collected my tray of goodies then sat beside me while I ate and drank – he never strayed or made any attempt to 'visit' anyone else's table and was not interested in the food on my table. On the contrary, the other dog was wandering around making a nuisance of itself – so my dog was smaller and

**We can look after your dog  
(and small animals) in our own  
home within a one-acre  
'dog proof' garden.**

Our rates are modest, and our service exceptional for both day care or holiday periods. Your pet will be treated like one of the family and will be walked at least 3 times a day.



For further information  
just call Jo or Andrew  
01494 837175

**APT Pet Care**  
www.chalfontapt.com

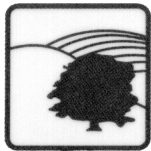
## On leaving The Lee

By Mike Senior

There was a time when Wendover was just a name on the Chiltern Line. If you were unfortunate in having to visit Aylesbury, Wendover was somewhere you went through or around at the greatest possible speed. It was The Lee that was the centre of all things. It was the place where everything happened that was worth happening. Where else could there be such Flower Shows, Church Fêtes, Cock and Rabbit barbecues, Midsomer murders and Old Church teas? Where else could there be such endearing pot-holes and flooded roads? Where else were there so many charming glis glis – illegal immigrants, all of them. The Lee



**KINGSHILL**  
CARS FOR ALL OCCASIONS



CHILTERNNS

AIRPORTS



LONDON

**01494 868699**

Email: [bookings@kingshillcars.co.uk](mailto:bookings@kingshillcars.co.uk)

was a village apart – a special place with special people. It still is.

Of course, after two years in Wendover, things seem different - it's just a matter of perspective. In which other village can you find three Indian restaurants, half a dozen pubs, several barber shops (one related to a parrot), a mini-supermarket, a shoe repairer, a fish and chip shop, more antique shops than Amersham and charity shops to rival Chesham? Where else has more coffee shops than Cuba? You can stroll along the canal and feed the ducks. You can walk to the railway station. Cars are irrelevant. And when people say, "Welcome to Wendover, have a nice day", they mean it.

Of course, nowhere is absolutely perfect and both The Lee and Wendover have some common irritants - plastic wheelie-bins (surely the low-point of human endeavour); white lines and more road signs than the brain can deal with. The Lee may have its glis glis, but Wendover has its badgers. And a hundred years or so ago a sizeable area of Wendover (Swan Bottom and Kings Ash) was forcibly appropriated by The Lee, causing bad blood between the two villages. These days, when it comes to Beating the Bounds, small boys are turned upside down and their heads are used as mallets to mark the ground where the two parishes meet. It is claimed that this practice, while not encouraging high IQ levels in the area, ensures that the exact position of the boundary is fixed in the minds of the younger generation.

This quaint tradition is surely an indicator that the interests of The Lee and Wendover are shared and complementary. They should be twinned. To live in either of these wonderful villages is a privilege. To have lived in both is amazing good fortune.

## Church Fête another triumph



By Rod Neal, Organising Committee

If you were at the Trooping of the Colour or watching the RAF fly-past to celebrate the Queen's official birthday, you would have missed a truly wonderful afternoon at the fête on The-Lee Green last month. Community spirit was there for all to see and the sun shone!

The day began in the early hours with marker posts on the Green, car parking signs on the verges, gazebos in blue and green unpacked and assembled, two large tents erected for the cake stall and tombola and on cue, a large black rain cloud drifting overhead resulting in us all getting a thorough soaking.



Like some carnival float from Rio, the kick and splash gear was next to arrive on Trevor Pearce's trailer, the games equipment was unloaded and a second load brought us tables of various shapes and sizes to complete the set up. The bouncy castle was plugged in, the



### Kings Ash Tree Services

Crown Shaping (reduction, raising or thinning), Tree Removal, Hedge Trimming, Hedge Removal, Stumpgrinding and Woodchipping

Mobile 07788 939395  
Home 01494 837464  
[www.kingsash.co.uk](http://www.kingsash.co.uk)  
7 Oxford Street, Lee Common  
Great Missenden HP16 9JY



ice-cream fridge wheeled into position, a number of rats caught for splatting, skittles lined up and the coconuts slotted into their holders. It was then time for the stallholders with their boxes, containers and wheelbarrows to equip their stalls, decorate them with flags and bunting and make last minute preparations. Finally, Sam Speed trotted up to the War Memorial ready for an afternoon of low-speed pony rides.

proceedings and the fête got underway. There was a steady stream of visitors and all the stalls and events were kept busy throughout the afternoon. We



were able to offer Splat the Rat (although we did wonder whether HS2 should be substituted), Hoopla, Human Fruit Machine, Childrens' Tombola, Face-Painting, Garland-Making, Toys, Bric-a-brac, Books, Tombola, Cakes and Home Produce, Raffle, Plants, Pancakes, Pimms,

Woodcrafts, Kick 'n Splash, Skittles and Coconut Shy. There was something for everyone, both young and old, including a number of Tugs of War for the energetic and burly. There



were the all important cream teas too in the Old Church; organised by Wendy Robertson and her marvellous band of helpers.

By 5:00 pm David Burgess had completed the draw of some 40 raffle prizes, donated by individuals and local businesses, and then it was time to take everything down, return the equipment and tables whence they came and have a much earned pint at the Cock & Rabbit to contemplate how the day had gone.

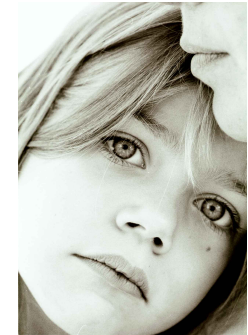


We were blessed with a lovely sunny afternoon which made the occasion so enjoyable. Very grateful thanks must go to all the stallholders, the raffle ticket sellers, the tombola donors, the school and nursery parents, the cake bakers, the helpers, the scouts and all those who came to support to make the fête such a success both in terms of bringing the community together and in raising funds for St John the Baptist Church.



Through your efforts we have been able to raise £4,375 which is a fantastic amount and which has been bumped up by a very generous donation of £5,000 from Liz Stewart-Liberty, bringing the total to £9,375. Liz would like some of her donation to be used to tidy up the churchyard.

## Pippa Hart Photography



Natural & Informal  
Black & White  
Portraits

01494 837340  
www.pippahart.com